



BOYDELL COURT, NW8 6NL

BOYDELL COURT, NW8 6NL

A well presented interior designed three bedroom apartment in a sought after complex with 24 hour concierge and parking set in landscaped communal gardens. The flat is set on sixth floor and provides contemporary open plan living spaces including a double reception room and kitchen. The three bedrooms include fitted wardrobes. Swiss Cottage (Jubilee line) tube is about 0.2 miles whilst St John's Wood High Street's boutiques and cafés are approximately half a mile.

- 3 bedrooms • 3 bathrooms • Open-plan living room and dining room • kitchen • 24 hour concierge • Camden Council Tax Band F • EPC Rating - C • Council Tax Band F

EPC Rating: C Council Tax Band: F

£1,300 PER WEEK

FURNISHED/UNFURNISHED

TENANTS FEES: As well as paying the rent, tenants may also be required to make the following permitted payments:

Holding Deposit (maximum of 1 week's rent)

Security Deposit equivalent to 5 or 6 weeks' rent (AST tenancies)

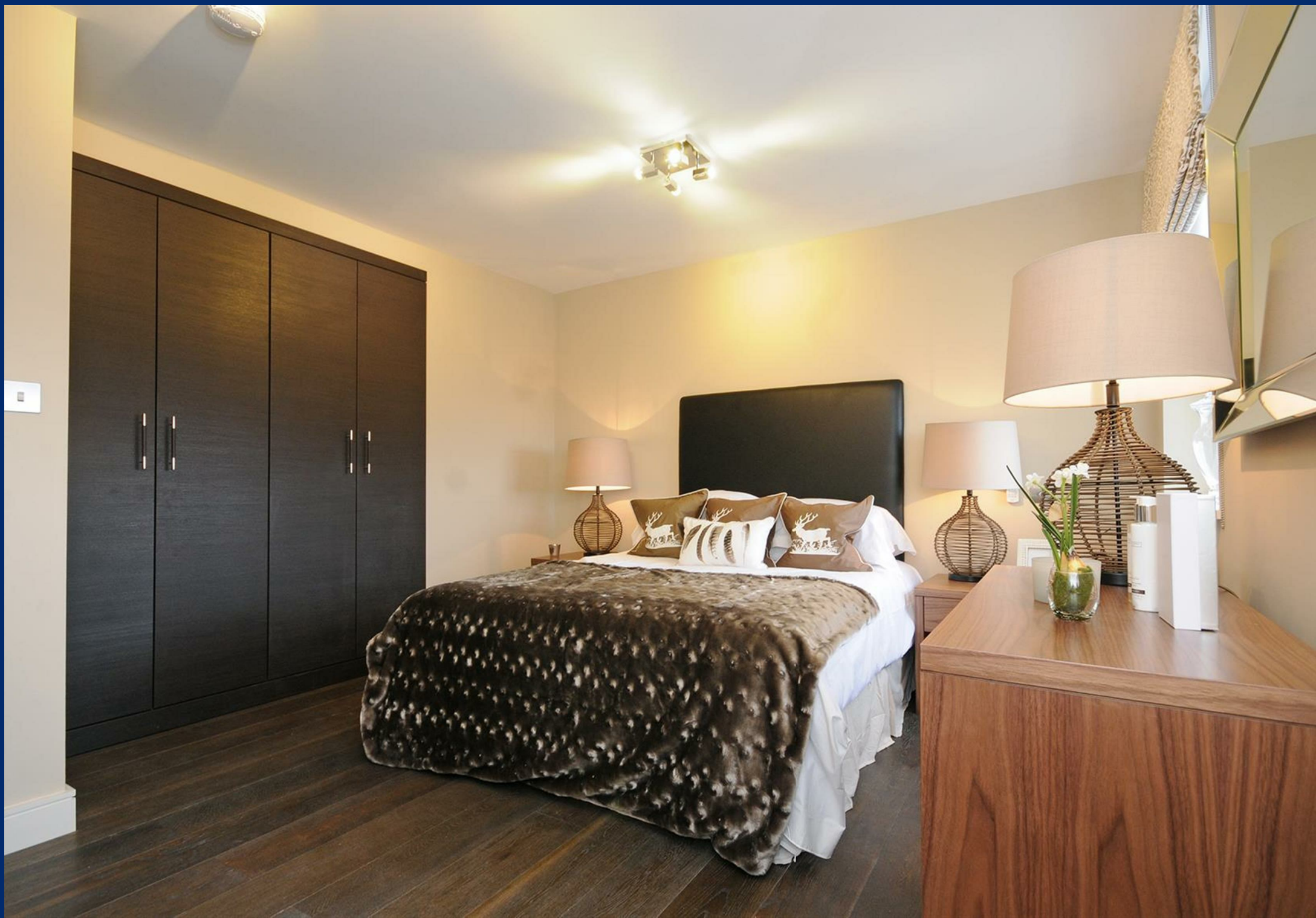
Utilities, Communications services charges including TV licence, and Council Tax

Please contact us for information regarding any further Tenants permitted payments under the Tenant Fees Act 2019

Misrepresentation Act 1967. This brochure and the descriptions and measurements herein do not constitute representation and whilst every effort has been made to ensure accuracy, this cannot be guaranteed.









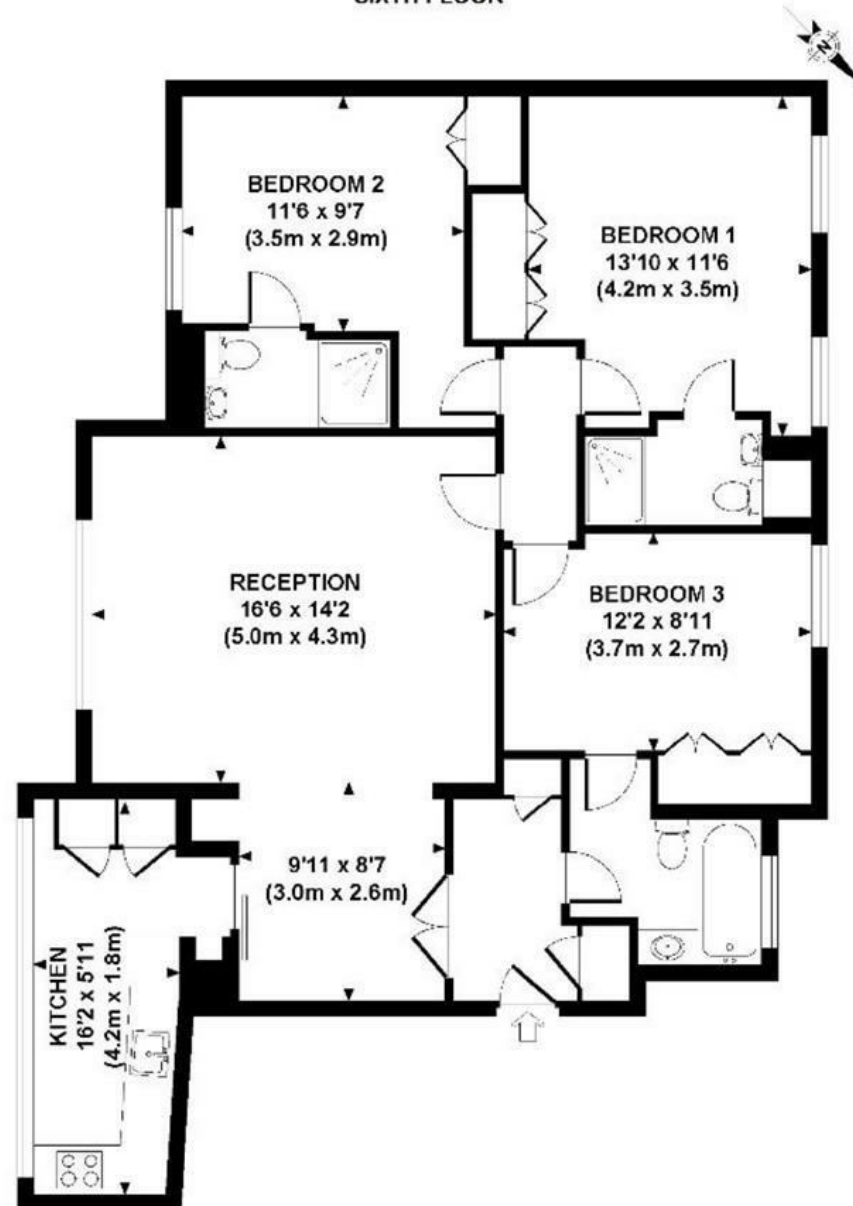








46 BOYDELL COURT
SIXTH FLOOR



APPROXIMATE GROSS INTERNAL AREA 1062 SQ FT / 99 SQ M

Although every attempt has been made to ensure accuracy, all measurements are approximate.
The floor plan's for illustrative purposes only and not to scale. Measured in accordance to RICS standards.
DE-PHOTOGRAPHY.NET